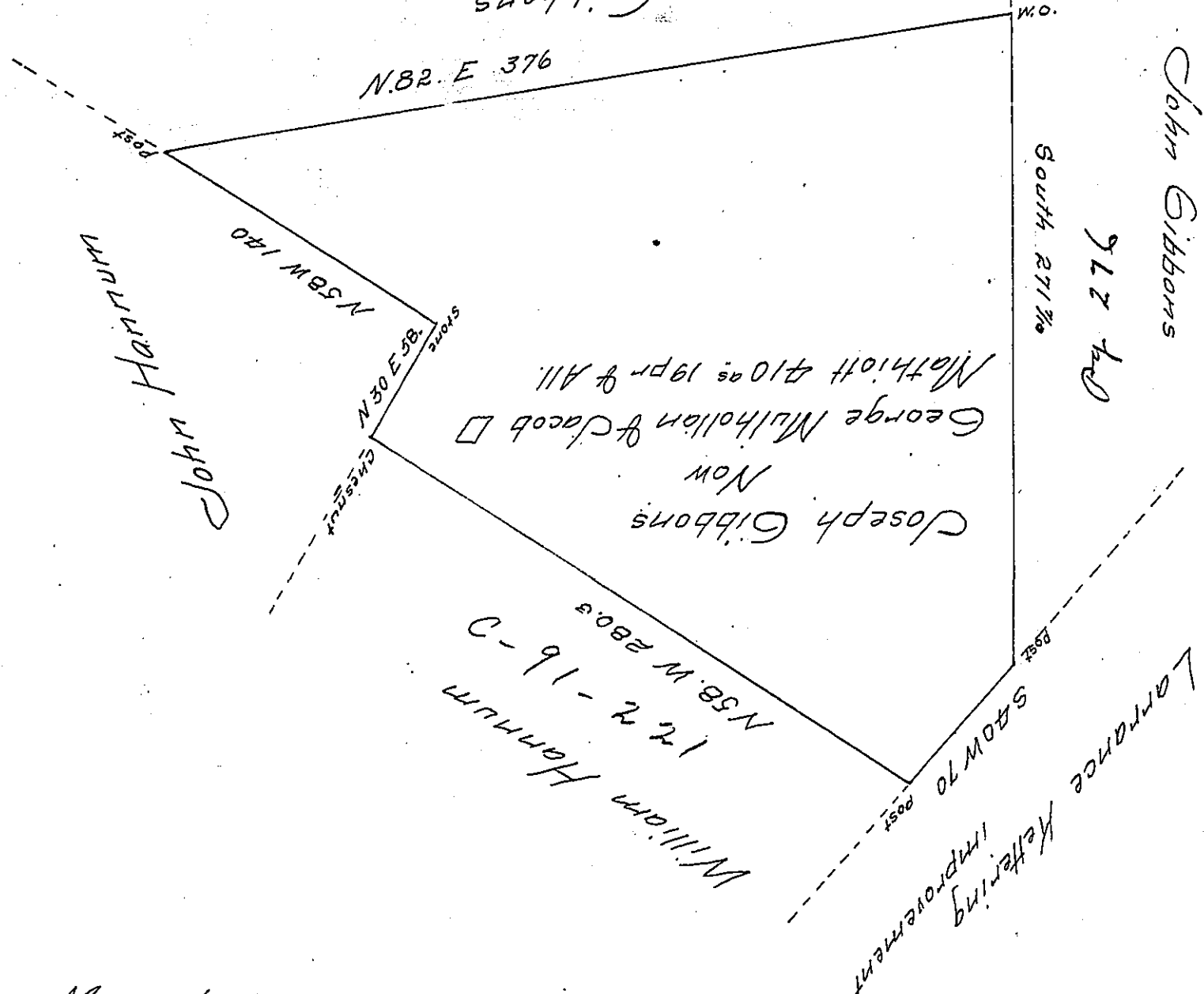


James Gibbons
Pg 274



May 10th 1838

Surveyed the above described Tract of Land for George Mulhollan & Jacob Mathiott In Pursuance of A Warrant Granted to Joseph Gibbons dated the 30th day of December 1793 Containing Four hundred and ten acres And Nineteen perches And the Usual Allowance of Six per Cent for Roads &c Situate on the Chesnut Ridge in Perry Township And in the County of Westmoreland

To John Taylor Esquire } George Mechling for
Surveyor General of Penna. } John Gay D.S.

I believe the above Survey to be correct
John Gay D.S.

IN TESTIMONY that the above is a copy of the original remaining on file in the Department of Internal Affairs of Pennsylvania, made conformably to an Act of Assembly approved the 16th day of February, 1833, I have hereunto set my Hand and caused the Seal of said Department to be affixed at Harrisburg, this Eleventh day of March 1908

Henry Howell
Secretary of Internal Affairs.